

# HURRICANE

## PREPAREDNESS GUIDE

### OFFICIAL GUIDE FOR BRAZORIA COUNTY

# 2017

## ARE YOU PREPARED?

- 🌀 **STEAR REGISTRY**
- 🌀 **EMERGENCY INFORMATION**
- 🌀 **EVACUATION PLANS**
- 🌀 **COMMUNITY PLANNING**



See back  
cover  
for info

THIS BOOKLET CONTAINS VITAL INFORMATION TO ASSIST YOU THROUGH HURRICANE SEASON. KEEP THIS GUIDE READILY AVAILABLE THROUGHOUT THE SEASON AND BY YOUR SIDE DURING AN EVACUATION.

**CONTAINS UPDATED INFORMATION FOR 2017**



# BRAZORIA COUNTY BE PREPARED

*Dear Citizens of Brazoria County,*

*This brochure is being provided to ensure your education in being prepared for the upcoming 2017 Hurricane Season. Take a few minutes of your busy schedule to read this brochure, and then apply the information. It could save you, a member of your family or your neighbors' life!*

*Preparedness is the key to protecting your family and property. Please make your plans now. Doing so, you will ensure that you and your family will survive any hurricane that may threaten our area. Know your vulnerability and what actions you should take to prepare for most emergencies.*

*Sincerely,*

*Brazoria County Emergency Managers*

## HOW CAN I HELP?

### **BRAZORIA COUNTY CITIZEN CORPS**

In large emergencies, first responders in our community can be overwhelmed quickly. Citizens on scene may need to take action to help save lives.

Citizen Corps provides training that will allow you to protect yourself, your family, and your neighbors.

The Brazoria County Citizen Corps has several key missions:

- Initial Neighborhood Response
- Staffing Evacuation Hubs for an evacuation
- Performing Preliminary Damage Assessments
- Assist with staffing of shelters during disasters
- Staffing the Emergency Management Call Center
- Assisting with distribution of food, water, and ice during emergencies

#### **ALL TRAINING IS FREE**

Positions for everyone! Great for groups and organizations! Sign up today!

See our calendar at [www.homelandpreparedness.org](http://www.homelandpreparedness.org) or contact Homeland Preparedness Project at: [info@homelandpreparedness.org](mailto:info@homelandpreparedness.org) or call 979-864-1646.



### **PEARLAND AREA CITIZENS CORPS (PACC)**

Local emergency management agencies along with fire, police and EMS may not be able to meet all the demands for a community-wide event. Factors such as the number of evacuees, victims, communication failures, and road blockages will challenge our community. People will have to rely on each other for help and volunteers will be needed for pre and post incident functions all year round.

PACC has openings in many programs for citizens that live in northern Brazoria and surrounding counties.

For more information, please contact Buck Stevens at: [buckstevens@gmail.com](mailto:buckstevens@gmail.com) or 281-997-9777 or visit our website at: [www.pearlandcc.org](http://www.pearlandcc.org).

# BRAZORIA COUNTY 2017 HURRICANE PREPAREDNESS GUIDE

## IF YOU NEED A RIDE OUT OF TOWN

- STEAR Registry ..... 2
- Evacuation HUBS in Brazoria County ..... 3

## IF YOU HAVE YOUR OWN TRANSPORTATION

- Evacuation Plans ..... 4
- Evacuation Zones ..... 5
- Public Shelters ..... 6
- Animal Evacuations ..... 6
- Evacuating Livestock ..... 7

## GETTING PREPARED

- Sign Up to Get Informed ..... 7
- Prepare For Stormwater ..... 7
- Prepare Your Home ..... 8
- Prepare Your Vehicle ..... 8
- Family Disaster Check List ..... 9
- Flood Prone Areas and Levees ..... 10
- Communication Information ..... 11

This booklet contains vital information to assist you through hurricane season. It is strongly recommended that you keep this guide readily available throughout the season and by your side during an evacuation.



**ARE YOU PREPARED?**  
**We're Here to HELP.**







# IF YOU NEED A RIDE OUT OF TOWN

## 2-1-1 Registry S.T.E.A.R. (State of Texas Emergency Assistance Registry)

### IF YOU HAVE SPECIAL HEALTH CARE NEEDS OR NEED A RIDE TO SAFETY, REGISTER WITH STEAR TODAY!

If you have special health care or transportation needs, you need to make extra efforts to get ready for hurricane season. Remember, hurricane season starts June 1 and continues through November 30. **Register before a storm is in the Gulf!** This service is for people who cannot drive themselves and cannot make transportation arrangements. REGISTER TODAY BY DIALING 2-1-1 or online at: [bit.ly/TXSTEAR](http://bit.ly/TXSTEAR)

ON-LINE REGISTRATION IS NOW AVAILABLE!

STATE OF TEXAS EMERGENCY ASSISTANCE REGISTRY.

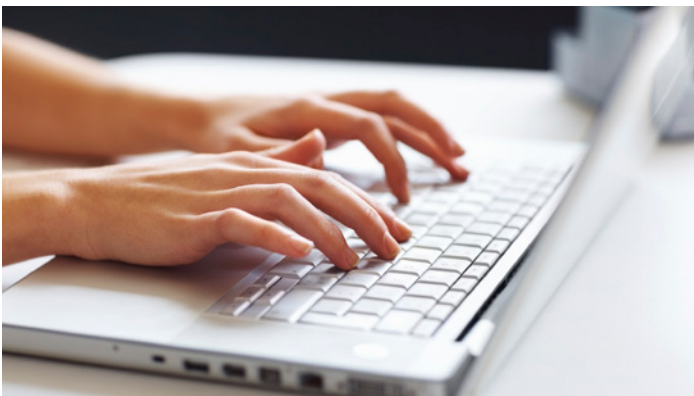
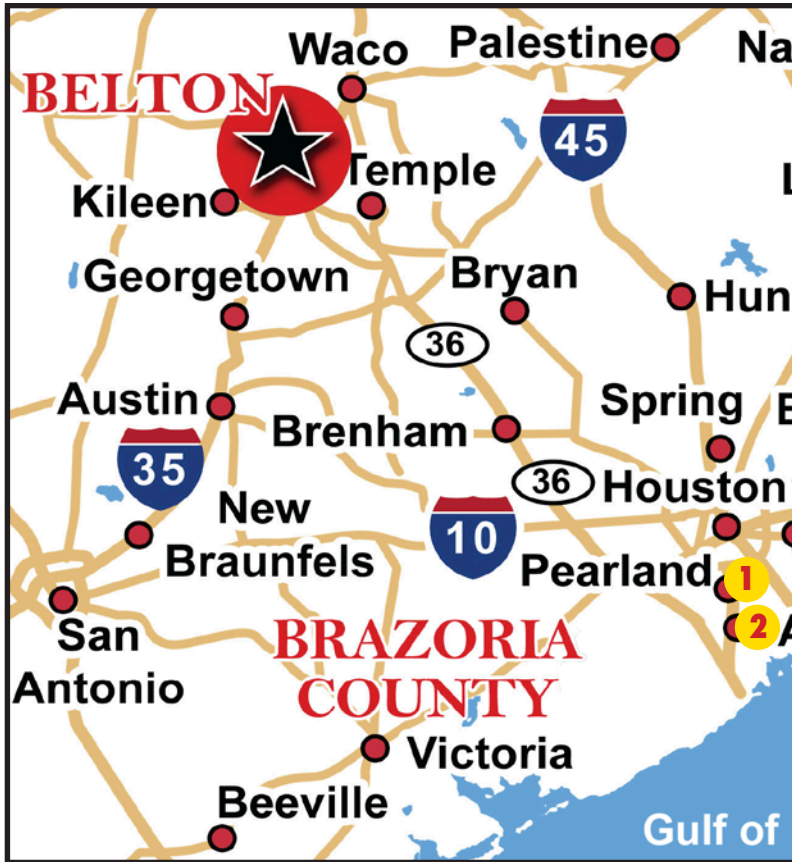
**IF YOU NEED TRANSPORTATION, REGISTER WITH STEAR:** Register IN ADVANCE for a ride by dialing 2-1-1. If those attempts fail, contact your local emergency coordinators office (numbers found on pages 11 - 13).

**! ON-LINE REGISTRATION NOW AVAILABLE !**  
STATE OF TEXAS EMERGENCY ASSISTANCE REGISTRY



**DIAL 2-1-1**

**DON'T WAIT, REGISTER NOW!**



Online at: [bit.ly/TXSTEAR](http://bit.ly/TXSTEAR)

# IF YOU NEED A RIDE OUT OF TOWN

## Evacuation HUBS in Brazoria County

### WHAT IS A HUB?

A HUB is a meeting location for residents who:

- Need public transportation during an evacuation
- Registered with STEAR for public transportation

At this location, residents will be checked in and bused to public shelters in Belton, Texas. **FIREARMS ARE NOT PERMITTED.**

Brazoria County has been divided into two HUBS. If you need public transportation during an evacuation, you will need to get to one of these HUBS\*.

### WHAT SHOULD I BRING WITH ME?

- You MUST bring your driver's license or state issued picture ID.
- Medications for at least 10 days
- Toiletries, snacks, and 5 days worth of clothing
- No more than two pieces of luggage and one carry-on bag per person.
- Household pets (dog/cat) in a sturdy plastic or metal cage/transport device (no reptiles or aggressive animals will be allowed).
- Proof of Residency such as a current utility bill

### WHAT IS NOT ALLOWED IN A PUBLIC SHELTER?

Alcoholic beverages, weapons, and illegal drugs are not allowed in public shelters.

### PUBLIC TRANSPORTATION AND ANIMAL EVACUATIONS

If you are utilizing county transportation at a HUB location, there are several rules that must be followed. These rules are imposed to ensure the safety of everyone and will be enforced without exception. **HUB Coordinators have final say over all pet transports.**

- Only non-aggressive household pets will be permitted. No reptiles or farm animals.
- Up to two pets per household will be allowed on the bus. If you feel you MUST take more than two pets, please contact your city's local emergency manager BEFORE an evacuation is called.
- All animals MUST be transported and housed in a sturdy plastic or metal cage/transport device. No cardboard or partly enclosed devices will be allowed.
- Animals must remain secured in the travel device at ALL TIMES while on the bus.
- All animals must have current rabies shot records.
- Owners are responsible for supplying food and water for their animals.
- Please understand we are not liable for any losses or injuries your animal may sustain while being evacuated.

### WILL MY PET RIDE WITH ME?

As a general rule, pets will be transported with the owner. However, if a situation dictates, they may be transported in a separate vehicle.

- 1 PEARLAND**  
Recreation Center  
4141 Bailey Road  
Pearland, TX
- 2 ANGLETON**  
Fairgrounds  
901 S Downing Rd  
Angleton TX

\* If you need assistance getting to one of these HUBS, locate your local emergency coordinators to find staging locations.

**EVACUATION DESTINATION:**  
 **EXPO Center**  
301 West Loop 121  
Belton, Texas 76513





# IF YOU HAVE YOUR OWN TRANSPORTATION

**Evacuation Plans** If you think you need to evacuate, leave as early as possible.

**IT IS NOT SAFE TO WAIT!**



## HOW DO I KNOW WHEN TO EVACUATE?

Mandatory evacuation orders will come from your local officials. Evacuations will be based on zip codes. Please be prepared to leave immediately.

See pages 11 - 13 for specific information pertaining to your city's communication of recommended evacuations.

## SHOULD I EVACUATE?

Local officials will make mandatory evacuation decisions before a storm makes landfall. Hurricanes are extremely unpredictable and can become much more dangerous in a matter of hours. It is NOT safe to wait. **Plan to leave early.**

## WHERE SHOULD I GO?

You may evacuate to any city you choose. Brazoria County residents have been assigned Belton, Texas for public shelters. If you do not have hotel reservations or family you can stay with, you may evacuate to the public shelters. See map on page 3.

## WHAT ROUTE SHOULD I TAKE?

There are no mandatory routes you must take when evacuating from your city. In fact, there are several different routes you may take. When weather is good, take your family on an outing to check routes and become familiar with roadways.

The State has designated evacuation routes: SH-36, SH-288, SH-6, I-45, SH-290, HWY-59. If you choose to take an alternate route, essential services such as food, fuel, etc. are not guaranteed.

Please understand that depending on the strength of the storm, contra-flow lanes might be open on SH-45, I-10, and SH-290 thirty-six (36) hours prior to the arrival of gale force winds. Plan your evacuation routes carefully (having more than one route planned), realizing that contra-flow lanes have priority over all other routes.

## WHEN EVACUATING YOU SHOULD:

- Coordinate your departure with the people who will be traveling with you. Notify an out-of-area person of your evacuation plans.
- Make arrangements for your pets.
- Pack your disaster supply kit into your vehicle.
- Secure your home.
- Double check your evacuation route and leave.

## I DON'T WANT TO EVACUATE!

**Should you choose to stay, please remember there are NO SHELTERS in Brazoria County.** There will be **NO SERVICES available to you (sewer, water, etc).** Hospitals will close, ambulances will not run, and police and fire cannot respond until the storm passes.

## WHEN SHOULD I RETURN?

Be sure your home/community is safe for you to return.

Local emergency managers will utilize:

1. local media & social media
2. public call and notification systems
3. websites to notify residents when its safe to return.

If you do not have access to any of the above resources, contact your city's emergency management coordinator's office or the county's

emergency manager's office before returning. This information can be found on pages 11- 13. As a last resort you may call Bell County at 254-933-5587.





# IF YOU HAVE YOUR OWN TRANSPORTATION

**Mandatory evacuations will be based on zip codes. Be prepared to leave immediately after your zip code is called.**

**FUEL**

- Keep your fuel tank at least half full during hurricane season.
- Motorists should fill their tanks before evacuating.
- TxDOT has worked with the private sector to assure maximum-possible fuel during an evacuation.
- TxDOT courtesy vehicles will be patrolling major evacuation routes for those stranded.

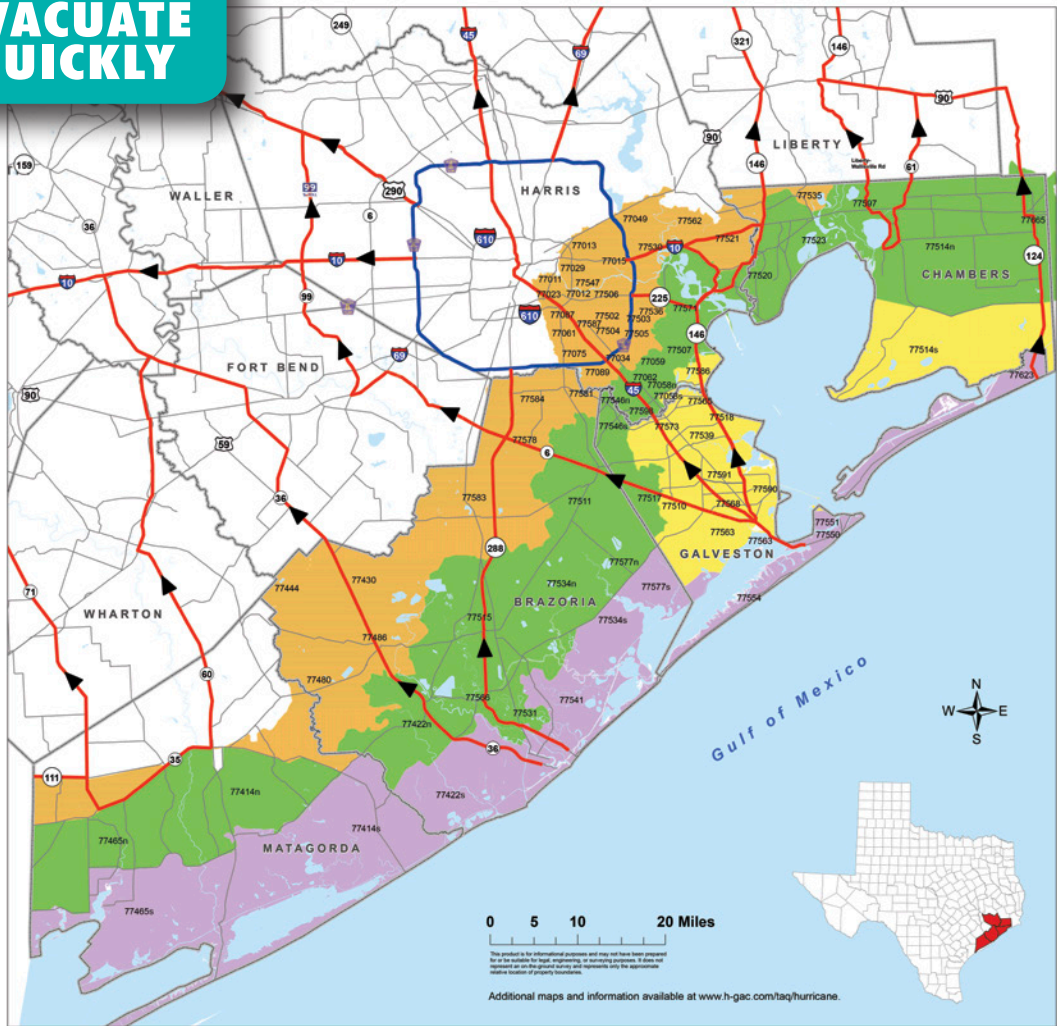
**KEY TELEPHONE NUMBERS**

- The number to call for road conditions on state highways is **1-800-452-9292** or **drivetexas.org**.
- If you have an emergency, call **9-1-1**.



**KEEP CALM AND EVACUATE QUICKLY**

## Evacuation Zones



**Brazoria, Chambers, Galveston, Harris and Matagorda Hurricane Evacuation Zip-Zones Coastal, A, B, C**

ZIP ZONE COASTAL				
77414s	77422s	77465s	77534s	77541
77550	77551	77554	77563	77577s
77623				
ZIP ZONE A				
77058n	77510	77514s	77518	77539
77563	77565	77568	77573	77586
77590	77591			
ZIP ZONE B				
77058n	77059	77062	77414n	77422n
77485n	77507	77511	77514n	77515
77517	77520	77523	77531	77534n
77546n	77546s	77566	77571	77577n
77597	77598	77665		
ZIP ZONE C				
77011	77012	77013	77015	77017
77023	77029	77034	77049	77061
77075	77087	77089	77430	77444
77480	77486	77502	77503	77504
77505	77506	77521	77530	77535
77536	77547	77562	77576	77581
77583	77584	77587		

Some zipcodes are split into north (n) and south (s) for evacuation purposes.

**Route Designation**  
 Evacuation Corridors  
 Evacuation Connections  
 Other Roads  
 County Boundary



**HGC** Revision Date: March 31, 2017  
 Expiration Date: December 31, 2017  
 Map Created by:  
 Houston-Galveston Area Council

This product is for informational purposes only and may not have been reviewed for its suitability for legal, engineering, or other professional purposes. It does not constitute an offer of insurance or any other financial product. It is not intended to be used as a substitute for professional advice. It is not intended to be used as a substitute for professional advice. It is not intended to be used as a substitute for professional advice.

Additional maps and information available at [www.h-gac.com/taq/hurricane](http://www.h-gac.com/taq/hurricane).



# IF YOU HAVE YOUR OWN TRANSPORTATION

If you have your own ride out of town but need a place to stay, you may go to the Expo Center in Belton, Texas. See page 3 for a map.

## PUBLIC Shelters

### IF I PLAN ON GOING TO A PUBLIC SHELTER, WHAT ADDITIONAL ITEMS SHOULD I TAKE?

Public shelters are basic facilities that provide temporary housing for evacuees. Most shelters do not have beds or cots, so you will probably be sleeping on the floor. So pack as if you were going camping. You should bring:

- Sleeping pads or air mattresses
- Blankets or a sleeping bag for each person
- Robe & shower shoes (and toiletries)
- Books, cards, games and QUIET toys for children
- Medications for your family

### WHAT IS NOT ALLOWED IN A PUBLIC SHELTER?

Alcoholic beverages, weapons, and illegal drugs are not allowed in public shelters.

**Firearms are not permitted.**

### SHOULD I CARRY FOOD AND DRINKS IN MY CAR?

Yes! Stopping for food or drinks during a large scale evacuation may significantly delay you in getting to your destination. Some restaurants and stores along hurricane routes may be closed and those that are open are likely to be very crowded. Additionally, once you leave the evacuation route to purchase food or drinks, it may be difficult to re-enter the flow of traffic.



### WHAT CAN I DO TO HELP OTHERS?

Check on friends and neighbors to make sure they have transportation or to see if they need help in getting essential items together so they can be ready to evacuate. Assist them if you can. If you cannot, help them get in touch with the local emergency management office.

## Animal Evacuations

The inland shelter locations will be equipped to shelter most animals of all types. You may be restricted to the number and type of animals that will be sheltered. If you have questions, please contact your local emergency manager (pages 11 - 13). As a general rule, pets will be sheltered separately, with the exception of service animals that must stay with their owners. All animals must be housed in a sturdy plastic or metal cage. All food/medication must be provided by owner.



DEAR OWNERS,  
IF I'M RIDING WITH  
YOU, PLEASE DON'T  
FORGET TO PACK  
MY THINGS!



### IMPORTANT PET SUPPLIES

- Food, Water
- Non-tippable food and water containers
- Leash, Harness and Carrier
- Records of Vaccinations
- Medications

## Evacuating Tips

- Keep your vehicle in good repair with at least a half tank of fuel.
- Check on friends and neighbors who may have special needs.
- Prepare your disaster supplies kit NOW and take it with you when you evacuate (see page 9 for check list).
- Secure your home quickly and evacuate when asked to do so.





## YOUR OWN TRANSPORTATION

### Evacuating Livestock

#### WHERE TO GO?

If you have friends or family who have a place to board your livestock, that is your best option. Public shelters are temporary, lasting maybe a few days. When evacuating it's best to plan for long term, rather than a couple of days. Our assigned public shelter at the Bell County Expo in Belton, Texas can accommodate shelter for 150 cattle, 179 horses, and 300 head of sheep, swine and goats combined (high value livestock—horses, show animals, youth animal projects, etc.). The Expo is located on I-35 at exit #292 in Belton, Texas.



When evacuating, contact Mr. Lyle Zoeller as a courtesy at (254) 933-5305 before leaving home to let Bell County know you're coming. Other shelters for high value livestock are available throughout the state, but contact information on those sites isn't released until 120 to 72 hours before a storm makes landfall. As this information is received, it will be posted on the Brazoria County website at [www.brazoria-county.com](http://www.brazoria-county.com) and at the Emergency Management office at (979) 864-1064. Keep in mind that public shelters provide only shelter and water. Feed and hay are the owner's responsibility. **Public shelters require all equine to have current vaccinations and coggins test paperwork.**



Expo Center in Belton, Texas. Map on page 3.

For Brazoria County's complete Hurricane Preparedness Guide for Livestock, log on to: <http://bit.ly/bclivestock>

## STAY INFORMED

Get the latest news as it happens! Follow us on

- **FACEBOOK** at: [bit.ly/BrazoriaTX](http://bit.ly/BrazoriaTX)
- **On Twitter** @BrazoriaCounty and
- **Brazoria County website**  
<http://brazoriacountytx.gov>.

## GETTING PREPARED

### Sign up to get informed

#### PUBLIC CALL & NOTIFICATION SYSTEMS

Many cities in Brazoria County utilize a public call and notification system. You can have messages sent directly to your cell phone. Please check with your city to inquire if this service is available in your community.



# CAER

COMMUNITY AWARENESS & EMERGENCY RESPONSE

**979-238-CAER (2237)**  
**[brazosportcaer.com](http://brazosportcaer.com)**

Occasionally you may hear other blasts. These are signals for internal plant communications. When in doubt, call the CAER line.

#### If you hear the CAER Sirens at a non-scheduled time:

- |  |   |
|--|---|
| <ul style="list-style-type: none"> <li>• Go inside your home, car or building.</li> <li>• Close windows / turn off air conditioners.</li> <li>• Do not attempt to travel or start your vehicle.</li> <li>• If there is a potential for community impact, a Telephone Alert System (TAS) will be activated.</li> <li>• Call the CAER line 238-CAER (2237).</li> <li>• If the release gets inside your shelter, place a wet cloth over your mouth and nose.</li> <li>• If you hear the CAER Sirens, but can't get inside, move crosswind.</li> </ul> | <p><b>ALERT BLASTS:</b></p> <p><b>GAS RELEASE</b><br/>Continuous Blast</p> <p><b>ALERT</b><br/>Series of Short Blasts</p> <p><b>EVACUATE</b><br/>Series of 3 Short Blasts</p> <p><b>ALL CLEAR</b><br/>Series of 3 Long Blasts</p> |
|--|---|





# GETTING PREPARED

## Prepare Your Home



### HERE ARE SOME STEPS YOU CAN TAKE TO PROTECT YOUR PROPERTY BEFORE A STORM HITS:

- Find out the elevation of your property and check floodplain maps.
- Check your insurance coverage. Most homeowner insurance policies do not cover flood damage.
- Learn about the National Flood Insurance Program.
- Find out if your home meets current building code requirements for high winds. Structures that meet current high-wind provisions have a better chance of surviving violent windstorms.
- Install commercial shutters or prepare 5/8 inch plywood panels for your windows.
- Garage doors are frequently the first feature in a home to fail. Reinforce garage doors so that they are able to withstand high winds.
- Assess your property to ensure that landscaping and trees do not become a wind hazard. Trim all dead wood and weak or overhanging branches from all trees. Certain trees and bushes are vulnerable to high winds and any dead tree near a home is a hazard. Check with your city about tree trimmers' licensing and permit regulations and rules.
- Move outside items to safety, such as patio furniture, plants and grills.
- Put valuable documents in waterproof containers and take them with you when you evacuate.
- Turn off electricity at the main circuit breaker or fuse box to protect appliances from power surges and reduce the risk of live dangling wires after the storm.
- Remove perishable items from your refrigerator and freezer.
- Make a final walk-through inspection before closing the door.

## Prepare Your Vehicle

- Fill up with fuel before you leave town. It's smart to keep your tank at least half full during the entire hurricane season.
- Check your vehicle's fluid levels and ensure there is adequate coolant in the radiator.
- Don't forget your tires. Check for proper air pressure because hot road surfaces are rough on tires. Be sure that your spare tire has air and that you have the proper equipment to change your tire. Ensure you have a jack and lug wrench in your vehicle and know where they are in the vehicle. Your owner's manual should have instructions for changing tires and flats.
- Make sure to carry enough water and non-perishable food for you and your passengers in case you become stranded.
- If you are stranded, stay with your vehicle and use emergency flashers. Tie a white cloth on the antenna or door handle and raise the hood.
- Have a working flashlight and extra batteries in your vehicle.



### IF YOU'RE TRAVELING WITH CHILDREN BE SURE TO PACK ITEMS TO HELP KEEP THEM ENTERTAINED:

- Reading materials, puzzle, games and coloring books.
- Fun road games like Highway BINGO and I Spy. Go online to find lists and ideas.
- Low sugar snacks and sugar free drinks.
- A change of clothes for emergencies.





# FAMILY DISASTER CHECK LIST

## ESSENTIALS

- This booklet
- Battery-operated radio
- Flashlight
- Extra Batteries
- First Aid Kit (one for your home and one for each car)
- **Do not include candles. Candles cause more fires after a disaster than anything else.**

## WATER

- 7 gallons per person, minimum, in a food-grade, plastic container
- Additional water for sanitation

## FOOD

- Minimum 7-day supply of nonperishable food that requires no refrigeration or preparation and little or no water
- Dry cereal
- Peanut butter
- Canned fruits
- Canned vegetables
- Canned juice
- Ready-to-eat canned meats
- Ready-to-eat soups (not concentrated)
- Quick energy snacks
- Graham crackers

## SANITATION

- Disinfectant
- Household chlorine bleach
- Soap, liquid detergent
- Toilet paper, towelettes, paper towels
- Personal hygiene items
- Cloth towels (at least 3)
- Feminine supplies
- Plastic bucket with tight lid
- Plastic garbage bags, ties (for personal sanitation use)

## CLOTHING & BEDDING

- Plastic garbage bags, ties
- Sunglasses
- Rain gear
- Sturdy shoes or work boots
- Blankets or sleeping bags
- Complete change of clothing and footwear per person

## TOOLS AND SUPPLIES

- Whistle
- Aluminum Foil
- Crowbar
- Compass
- Paper, Pencil
- Plastic sheeting
- Medicine dropper
- Needles, thread
- Signal Flare
- Matches in a waterproof container
- Assorted nails, wood screws
- Pliers, screwdriver, hammer
- Plastic storage containers
- Heavy rope
- Cash, traveler's checks, change
- Map of the area
- Non-electric can opener, utility knife
- Cell phone with charger
- Mess kits or paper cups, plates and plastic utensils
- Tape, duct tape and plumber's tape or strap iron
- Patch kit and can of seal-in-air for tires
- Shut off wrench to turn off household gas & water

## FOR BABY

- Formula
- Diapers
- Bottles
- Medication
- Powdered milk
- Baby food

## FOR PETS

- Food, water
- Non-tippable food and water containers
- Leash, harness, carrier
- Records of vaccinations
- Pet medications

## IMPORTANT DOCUMENTS

- Important telephone numbers
- Record of bank account numbers
- Family records (birth, marriage, death certificates)
- Inventory of household valuables
- Copy of will, insurance policies, current utility bill
- Records of credit card account numbers and companies
- Copy of passport, social security cards, and immunization records

## FAMILY MEDICAL NEEDS

- Insulin
- Prescription drugs in original containers
- Heart and high blood pressure needs
- Denture needs
- Extra eye glasses
- Contact lenses and supplies
- Doctor's phone numbers

## ENTERTAINMENT

- Games & books

## YOU MAY WANT TO INCLUDE

Family photos, jewelry and select irreplaceable personal items.

### KEEP A SMALL BAG PACKED INCLUDING A MINIMUM OF THESE ITEMS:

- Personal sized bottled water (at least one for each family member; don't forget your pets)
- Dry snacks
- One complete change of clothing and footwear per person
- Cash, traveler's checks and/or credit cards, enough for food, gas and lodging.
- Important documents
- Medications with original prescription containers
- Maps (evacuation routes and shelters)
- For baby: formula, diapers, bottles, medication and powdered milk.
- For pets: food, leash, harness, carrier, non-tippable food and water containers
- It's a good idea to have some travel games or books for the kids



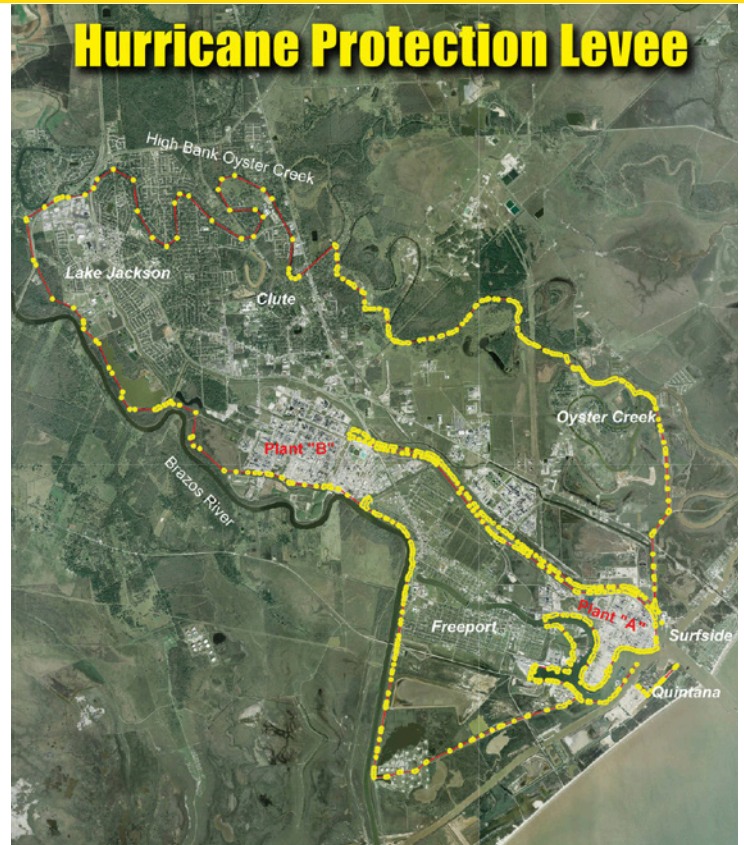
**CHECK YOUR VEHICLE'S FLUID LEVELS DURING HURRICANE SEASON AND KEEP YOUR FUEL AS FULL AS POSSIBLE!**



# GETTING PREPARED

## What to do if you live in a flood-prone area:

- Determine if you live behind a levee, find out who owns the levee near you, and do your part to promote levee safety.
- Visualize the impact if your levee is overtopped or breached and your neighborhood is flooded.
- Develop an emergency action plan to follow in case of flooding.
- Buy flood insurance.
- Take advance precautions to reduce potential flood damage.
- Support funding initiatives for levee improvement projects.



## HOW TO PREPARE FOR A

# FLOOD



### BE INFORMED

Stay informed through local media, trusted social media sites, city and/or county websites. Know if you are located in a floodplain and your flood risk.

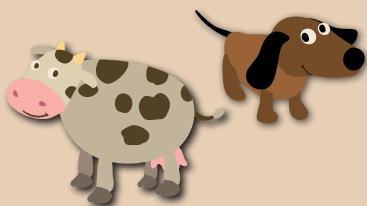


### IF YOU HAVE PETS OR LIVESTOCK

Consider precautionary evacuation of your animals. Waiting until the last minute could be fatal for them and dangerous for you. If possible, move livestock to higher ground.

Don't leave companion animals behind if you evacuate your home. Tying up animals can cause the animal to suffer unnecessarily and be vulnerable to the elements and possible drowning.

Prepare an animal emergency kit. The kit should include food, bowl, bed, toys and any medication your animal may need.



### PROTECT YOUR HOME

Clear gutters and drains. Keep gutter and drainage systems clear to carry water away from your home.

Catalog possessions. Using a digital camcorder or camera, create a home inventory for insurance. Store digital files on a USB drive and take it with you during an evacuation event.

Raise furniture and move expensive items to a safe location. Take irreplaceable items such as photographs and important documents with you if asked to evacuate.

Anchor your fuel tanks. Unanchored tanks can float, rupture and release fuel.

Turn off your electricity at the breaker box and unplug sensitive equipment, such as computers, TV's, etc. before evacuating your home.



### BE PREPARED TO EVACUATE

If Mandatory Evacuation is issued by officials, leave the area for your safety and the safety of your family. REMEMBER, take your animals with you. For your safety, you will not be able to re-enter an evacuated area until area is deemed safe to return by local officials.



The most up-to-date information available is provided by your local city and county emergency management coordinators.

These are the lines of communication and your guide to emergency information and community planning. Call your local information providers listed on the following pages if you have questions regarding hurricane preparedness.

Please contact your city’s emergency management coordinator’s office or the county’s emergency manager’s office with questions or concerns. These numbers can be found below and on pages 11 thru 13.

If your city is not listed, use the county numbers.

- BRAZORIA COUNTY**
- BRAZORIA COUNTY**  
 Emergency Management  
 eocstatus@brazoria-county.com  
 www.brazoria-county.com  
 Steve Rosa  
 Emergency Manager  
 24 Hour Hotline..... 979.864.1064  
 ..... 979.388.1064  
 ..... 281.756.1064
- BELL COUNTY**
- BELL COUNTY**  
 254.933.5587
- FEMA**
- FEMA**  
 1.800.621.FEMA (3362)
- RED CROSS**
- RED CROSS**  
 1-866-526-8300  
 1-800-RED-CROSS (733-2767)
- UNITED WAY**
- UNITED WAY**  
 1-800-971-6677
- SALVATION ARMY**
- SALVATION ARMY**  
 1-979-233-5420

# ARE YOU PREPARED?

## WE'RE HERE TO HELP.

- ALVIN**
- ALVIN**  
 Ron Schmitz  
 Emergency Manager ..... 281-388-4364  
 City Hall..... 281-388-4200  
 Public Works ..... 281-388-4325  
 City Manager’s Office ..... 281-388-4230  
 Mayor’s Office ..... 281-388-4275  
 Cable Access Channel..... Channel 16  
 Website: www.alvin-tx.gov  
 www.alvinpolice.org  
 Alvin ISD ..... 281-331-2320  
 KACC RADIO 89.7 FM
- ANGLETON**
- ANGLETON**  
 Katherine Davis  
 Emergency Manager ..... 979-849-2383  
 City Hall..... 979-849-4364  
 City Manager’s Office ..... 979-849-4364  
 Mayor’s Office ..... 979-849-4364  
 Fire..... 979-849-1265  
 Website: www.angleton.tx.us  
 www.angletonpd.net  
 Angleton ISD ..... 979-864-8000
- BAILEY’S PRAIRIE**
- BAILEY’S PRAIRIE**  
 Jo Mapel  
 Emergency Manager ..... 979-849-0134  
 Jo Mapel, Mayor..... 979-849-0134  
 Village Hall..... 979-849-0134  
 Website: www.baileysprairie.org
- BONNEY**
- BONNEY**  
 Raymond Cantu  
 Emergency Manager/Mayor ..... 281-595-2269  
 City Hall . 281-595-2269  
 Website: www.bonneytexas.gov



**COUNTY AND CITY COMMUNICATION INFORMATION**

**BRAZORIA**

David Jordan  
 Emergency Manager ..... 979-798-8002  
 City Hall..... 979-798-2489  
 Teresa Borders, City Manager..... 979-798-2489  
 24 hr. Emergency Info. Line ..... 979-798-9131

**BROOKSIDE VILLAGE**

Craig Bailey and Robert Lira  
 Emergency Management..... 281-485-3048  
 Sonny Atkins, Police Chief..... 281-485-4844  
 Craig Bailey, Mayor..... 281-485-3048  
 City Hall..... 281-485-3048

**CLUTE**

Michael Waguespack, EMC..... 979-265-9653  
 Police Department...24 Hr Info ... 979-265-6194  
 Clute City Hall ..... 979-265-2541  
 Gary Beverly, City Manager ..... 979-265-2541  
 Website: www.ci.clute.tx.us  
 Brazosport ISD..... 979-730-7000  
 Website: www.brazosportisd.net

**DANBURY**

Cory Stefka  
 Emergency Manager ..... 979-922-1551 x2  
 Richard Stone, Mayor ..... 979-922-1551 x1  
 Jenny Brogger, City Secretary . 979-922-1551 x1  
 City Hall/Police Dept ..... 979-922-1551  
 Utility Dept..... 979-922-1551 x2  
 Fire Department ..... 979-922-1176  
 Police Dispatch ..... 979-849-2441  
 Danbury ISD ..... 979-922-1218  
 Website: www.danburyisd.org

**FREEPORT**

Chris Motley  
 Emergency Manager ..... 979-233-2111  
 Information Message ..... 979-233-KNOW  
 City Hall..... 979-233-3526  
 Police..... 979-239-1211  
 Troy Brimage, Mayor  
 Jeff Pynes, City Manager  
 Website: www.freeport.tx.us  
 Brazosport ISD..... 979-730-7000  
 Website: www.brazosportisd.net



**HILLCREST**

Don Lafont, EMC..... 832-602-9958  
 Monday - Friday 8 AM - 5 PM .... 281-756-0577  
 City Office Not Open Following An Emergency  
 Tom Wilson, Mayor ..... 281-748-7149  
 Patrick Caloway, City Marshal..... 713-562-8288  
 Website: www.cityofhillcrestvillage.org

**HOLIDAY LAKES**

Mon Wed Thurs & Fri 1 - 5 PM, Tues 1 - 7 PM  
 Norman Schroeder, Mayor..... 979.849.1136  
 Harold Douglas, Police Chief..... 979-849-3163  
 Sunday Strickler, City Secretary .. 979-849-1136  
 Website: www.holidaylaketexas.com

**IOWA COLONY**

Louis C. Hearn, Jr.  
 Emergency Manager ..... 281-369-3444  
 City Hall..... 281-369-2471  
 Michael Holton, Mayor..... 281-369-2471  
 Geri Frank, City Secretary..... 281-369-2471  
 Louis C. Hearn, Jr., Police Chief.. 281-369-3444  
 Website: www.cityofiowacolony.com

**JONES CREEK**

William Tidwell  
 Marshal/Emergency Mgr..... 979-292-6393  
 Gordon Schlemmer, Mayor..... 979-233-2700  
 Kenny McBride, Fire Chief ..... 979-201-3594  
 Kimberly Morris, City Admin. ... 979-233-2700  
 Marshal's Dept ..... 979-233-3091  
 City Hall..... 979-233-1826  
 Website: www.villageofjonescreektexas.com

**LAKE JACKSON**

William Yenne  
 Emergency Manager ..... 979-415-2500  
 City Hall..... 979-415-2400  
 Police Department ..... 979-415-2700  
 Website: www.lakejackson-tx.gov  
 Cable Access Channel ..... Channel 16  
 Brazosport ISD..... 979-730-7000  
 Website: www.brazosportisd.net





**COUNTY AND CITY COMMUNICATION INFORMATION**

**LIVERPOOL**

**LIVERPOOL**

Mark Roller  
 Emergency Manager .....281-581-2342  
 Bill Strickland, Mayor .....281-581-2342  
 Catherine Long  
 City Secretary.....281-581-2342  
 Ronnie Nance  
 Police Chief .....281-581-2233

**MANVEL**

**MANVEL**

Debra Davison, Mayor.....281-489-0630  
 Cell .....281-687-3203  
 Dave Ferguson, EMS Director .....281-489-6144  
 Kyle J. Jung, City Manager/  
 EMC .....281-489-0630  
 Thomas K. Traylor, Police Chief .281-489-1212  
 Fire Marshal .....281-489-0630  
 Steve DelBello, Fire Chief .....281-692-0279  
 Website: www.cityofmanvel.com

**OYSTER CREEK**

**OYSTER CREEK**

Capt. Rick Hempel  
 Emergency Manager .....979-233-8481  
 Chief Tim Bradberry  
 Police Department .....979-233-8481  
 Toby Guenter  
 City Administrator .....979-233-0243  
 C. Louis Guidry, Mayor  
 City Hall.....979-233-0243  
 Chief Mark Westmoreland  
 Fire Department .....979-233-2630

**PEARLAND**

**PEARLAND**

Allen Portman  
 Emergency Manager .....281-997-4648  
 City Hall.....281-652-1600  
 Mayor’s Office .....281-652-1654  
 Clay Pearson, City Manager .....281-652-1663  
 Police Department.....281-997-4100  
 Cable Access Channel... Channel 16/99 UVerse  
 Website: www.pearlandtx.gov



**QUINTANA**

**QUINTANA**

Mon. - Fri. 8 AM- 4:30 PM .....979-233-0848  
 Steve Alongis, Mayor & EMC .....979-233-4609  
 Mike Perkey: Water Emergency ..979-549-2083  
 Website: www.quintanatx.org

**RICHWOOD**

**RICHWOOD**



Mayor Mark Guthrie.....979-265-2082  
 Bryan Corb  
 Emergency Manager .....979-265-8157  
 City Hall.....979-265-2082  
 Website: www.richwoodtx.gov

**SURFSIDE**

**SURFSIDE**

Chief Gary Phillips..... 979-233-1531 ext 109  
 Emergency Coordinator .....979-239-1151  
 City Hall .....979-233-1531  
 Fire Department .....979-233-5926  
 Website: www.surfsidetx.org

**SWEENEY**

**SWEENEY**

Devin Lemon  
 Emergency Manager .....979-482-4617  
 Cindy King  
 City Manager/Asst. EMC .....979-548-3321  
 EOC (Only open during Emergency Situations) .979-548-4541  
 Information Line .....979-548-3330  
 After Hours.....979-548-3111  
 Website: www.sweenytx.gov

**WEST COLUMBIA**

**WEST COLUMBIA**



Chief Paul Odin  
 Emergency Manager .....979-345-5121  
 Debbie Sutherland  
 City Mgr./Emergency Mgr. ...979-345-3123  
 City Hall.....979-345-3123  
 City Information Line .....979-345-1999  
 EOC.....979-345-1900  
 Police Department.....979-345-5121  
 Susan Hays, CEMS Director .....979-345-2390  
 Charlie Glisch, Fire Chief.....979-345-3416  
 Website: www.westcolumbiatx.org

# ATLANTIC HURRICANE NAMES FOR 2017

Arlene	Gert	Maria	Tammy
Bret	Harvey	Nate	Vince
Cindy	Irene	Ophelia	Whitney
Don	Jose	Philippe	
Emily	Katia	Rina	
Franklin	Lee	Sean	



NON-PROFIT ORGANIZATION  
U.S. POSTAGE PAID  
ANGLETON, TX  
PERMIT NO. 38

\*\*\*\*\*ECRWSSDDM\*\*\*\*

Local Postal Customer

## Brazoria County's 4<sup>th</sup> Annual HURRICANE PREPAREDNESS EXPO

**SATURDAY - JULY 8, 2017**  
**Brazoria County Fairgrounds**  
**901 S. Downing, Angleton**  
**10 AM - 2 PM**

*\*\* An Interpreter for the Deaf and Hard of Hearing will be Available \*\**



**FREE Hot Dogs & Drinks** while they last

**Door Prizes and Goody Bags** while they last

**FREE Admission & Parking**

- ☔ Ready Heroes Presentation
- ☔ Kid Activities
- ☔ Emergency Vehicle Displays
- ☔ National Weather Service Presentation
- ☔ Emergency Preparedness Vendor
- ☔ Local Emergency Management Personnel
- ☔ Emergency Preparedness for Family & Pets

Thank You To Our Sponsors:



Thank You To Our Partners:

- \*City of Alvin
- \*City of Angleton
- \*City of Freeport
- \*City of Lake Jackson
- \*City of Pearland
- \*Homeland Preparedness Project
- \*Brazoria County Office of Emergency Management
- \*Texas A&M AgriLife Extension Service - Brazoria County

**Contact Sharon Trower @ 979-864-1200 or [sharont@brazoria-county.com](mailto:sharont@brazoria-county.com) for questions.**